



Fig : 1 Coconut Bud Rot



Fig : 2 Turmeric Leaf Spot



Fig : 3 Powdery mildew in Snake Gourd



Fig : 4 Paddy Leaf Folder



Fig : 5 Brinjal Fruit Borer



Fig: 1. Soil Heterogeneity with reference to texture



Fig: 2. White salts



Fig: 3. Soil Crusting



Fig: 4. Sodic soils

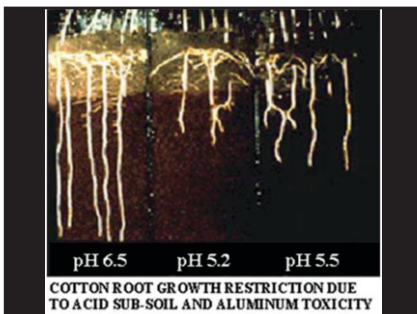


Fig: 5. Aluminum Salt



Fig: 6. Calcareous soil



Fig : 7. Actual acid sulphate soils



Fig : 8. Gully Erosion



Fig 1 . Parthenium



Fig 2 . Weed on Aquatic system



Fig 3. Irrigated Sorghum



Fig 4. Weed free Pearl millet



Fig 5. Weed free Ragi



Fig 6. Weed free Bengal gram



Fig. 1. Infestation of thrips on paddy (initial inward rolling)



Fig. 2. Infestation of thrips on paddy (Later silvery streak)



Fig. 3. Nymph



Fig. 4. Adult



Fig. 5. Paddy damage by GLH (Yellowing)



Fig. 6. Rice Tungro Virus



Fig. 7. Adult - Green Leaf Hopper

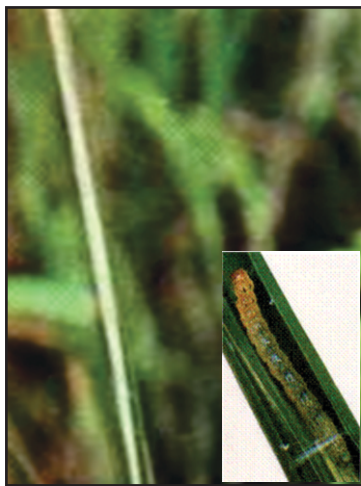


Fig. 8 & 9. Longitudinal folding by leaf folder



Fig. 10. White and dried leaves



Fig. 11. Burnt up appearance by BPH



Fig. 12. Grassy stunt by BPH



Fig. 15. Dead heart damage symptom by Paddy stem borer



Fig. 16. White ear symptoms of damage by paddy stem borer



Fig. 17. Paddy stem borer Egg



Fig. 18. Paddy stem borer Larva and Adult

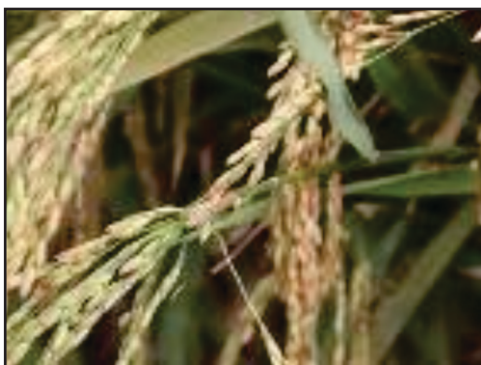


Fig. 19. Rice Earhead bug damage symptoms



Fig. 20. Rice Earhead bug (Adult)



Fig. 21. Sorghum shootfly damage (Dead heart symptom)



Fig. 22. Sorghum damage by Stem borer



Fig. 23. Leaf damage by Maize Stem borer



Fig. 24. Cumbu shoot fly damage (Chaffy grains)



Fig. 25. Finger millet Ear head bug and damage symptom



Fig. 26. Aphid



Fig. 27. Tobacco Cut worm



Fig. 28. Spotted boll worms (Adult)



Fig. 29. American boll worm



Fig. 30. Cotton pink boll worm



Fig. 31. Castor damage Semilooper



Fig. 32. Castor semilooper Larva



Fig. 33. Castor semi looper Adult

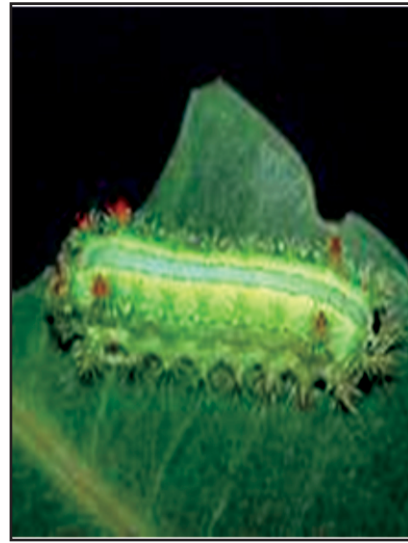


Fig. 34. Castor Slug



Fig. 35. Castor Slug adult



Fig. 36. Groundnut Red Hairy caterpillar larva



Fig. 37. Red Hairy caterpillar adult

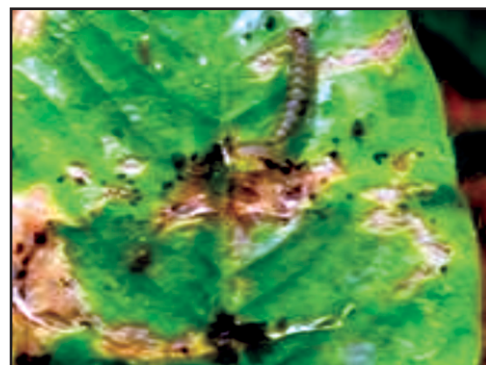


Fig. 38. Groundnut Leaf miner



Fig. 38. Groundnut Leaf Miner adult



Fig. 39. Tobacco caterpillar



Fig. 40. Mustard amage due to Diamond Back Moth (DBM)



Fig. 41. DBM adult



Fig. 42. Sesamum damage by Leaf webber



Fig. 43. Leaf webber adult



Fig. 44. Hawk or Dead head moth



Fig. 45. Sunflower Capitulum borer into head



Fig. 46. Tobacco caterpillar



Fig. 47. Bird damaged Parakeet



Fig. 48. Safflower caterpillar



Fig. 49. Gram pod borer damaged pod



Fig. 50. Spotted pod borer



Fig. 51. Blue butterfly adult



Fig. 52. Stem Fly infested stem with bore holes



Fig. 53. Damage by Early shoot borer



Fig. 54. Damage by ESB side tiller formation



Fig. 55. Early shoot borer larva



Fig. 56. Early shoot borer adult



Fig. 57. Inter node bored by Stem or inter node borer (Feeding injury)



Fig. 58. Reddening of cane by inter node borer



Fig. 59. Bore holes damage by internode borer

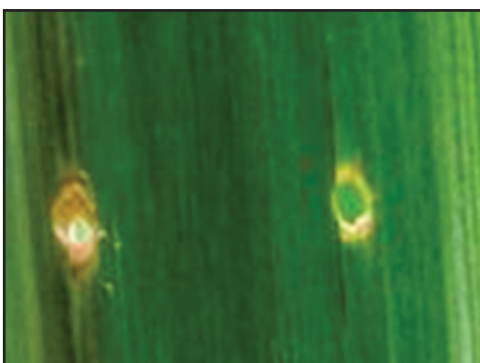


Fig. 60. Shot holes on leaves Damaged by Top shoot borer

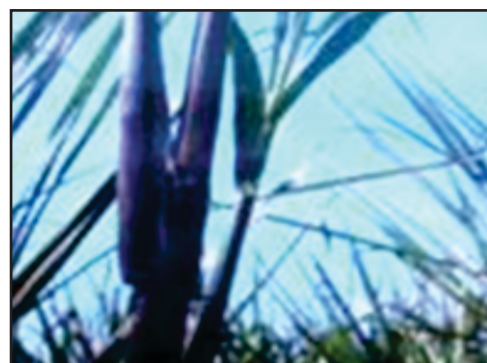


Fig. 61. Bunch top by Top shoot borer



Fig. 62. Dead heart by top shoot borer



Fig. 63. Top shoot borer Larva

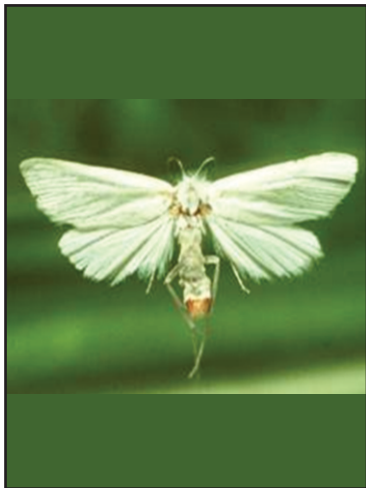


Fig. 64. Top shoot borer Adult



Fig. 65. Termite damaged Symptom



Fig. 66. Sugarcane Termite



Fig. 67. Brinjal Shoot and fruit borer Adult



Fig. 68. Brinjal shoot damage by shoot and fruit borer



Fig. 69. Tomato Fruit Borer



Fig. 70. Fruit sucking moth



Fig. 71. Fruit flies

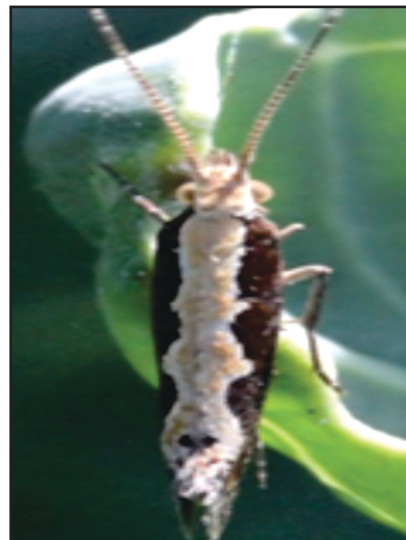


Fig. 72. Diamond back moth



Fig. 73. Potato tuber moth



Fig. 75. Mango nut weevil



Fig. 76. Citrus leaf miner



Fig. 77. Chickoo moth or leaf webber



Fig. 78. Tea mosquito bug



Fig. 79. Rhizome weevil



Fig. 80. Cashew tree borer



Fig. 81. Grapevine Flea beetle



Fig. 82. Rhinoceros beetle



Fig. 83. Coffee White borer



Fig. 84. Tea mosquito bug



Fig. 1. Forking in Raddish and Carrot



Fig. 2. Root Splitting in Carrot

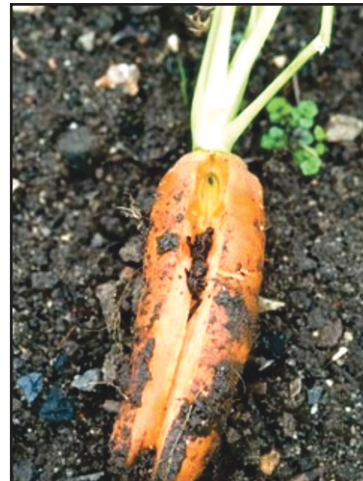


Fig. 3. Cavity Split in Carrot



Fig. 4. Spongy tissue in Mango



Fig. 5. Mango malfomation



Fig. 6. Black tip in mango



Fig. 7. Greening of potato



Fig. 8. Greening of potato



Fig.1. Effect of Drought Stress

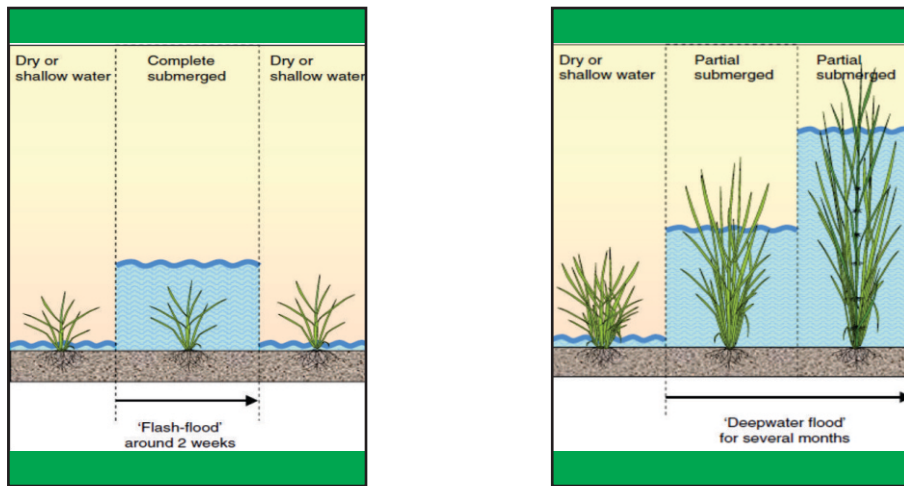


Fig.2. Types of Floods

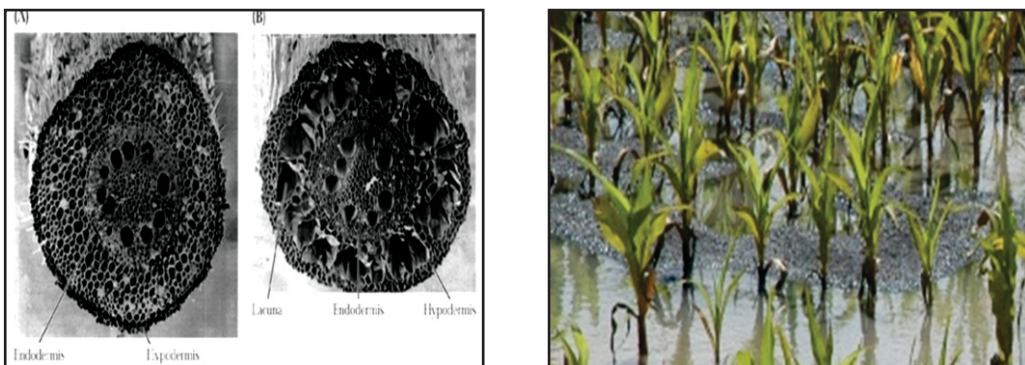


Fig.3. Iron Toxicity Symptom



Fig.4. Effect of Salt Stress on Plants



Fig.5. Effect of Heat Stress on Plants



Sponsor: Rashtriya Krishi Vikas Yojana (RKVY)

TNAU AGRITECH PORTAL

transforming the lives of farmers...



English | தமிழ்



Home | About Us | Success Stories | Farmers' Association | Farmers' Innovation | Publications | Contact |

Search

Agriculture



SRI, Rice, Pulses, Oil Seeds, Forage, Millets, Cereals, Season, Irrigation, Weed, Pest, Disease, [read more...](#)

Horticulture



Nursery, Fruits, Vegetables, Flowers, Spices, Plantation, Medicinal, Aromatic Crops, Landscaping, [read more...](#)

Agrl. Marketing



Commodity Boards, Schemes, Food Processing, Value Addition, Markets, [read more...](#)

Agrl. Engineering



Farm Machinery, Bio-energy, Processing, PHT, Machinery, Equipment, Conservation, [read more...](#)

Seed



Seed Production, Seed Certification, Processing, Breeder, Foundation, Seed Law, Seed Act, [read more...](#)

Organic Farming



Organic, Certification, Accreditation, Vermicompost, Pseudomonas, Panchagavya, [read more...](#)

Sericulture



Mulberry, Silk worm Rearing, Cocoon, Sericulture, [read more...](#)

Forestry



Agro Forestry, Social Forestry, Silviculture, Timber, Wildlife, Contract Farming, [read more...](#)

Fishery



Fresh water Fish, Marine Fish, Prawn, Fish Species, Riverine Fishery, Ornamental Fish, [read more...](#)

Animal Husbandry



Cattle, Livestock, Poultry, Piggery, Veterinary Services, Goat, Pig, [read more...](#)

TECHNOLOGIES

Crop Production
Crop Protection
Crop Improvement
Bio Technology
Post Harvest Technology
Nutrition
GAP | GLP | GMP
GUIDE: Agri | Horti

SPECIAL TECHNOLOGIES

Path Breaking Technologies **NEW**
Reed Bed System **NEW**
Technology Videos
PPFM-Pink Pigmented Facultative Methyotrops
Paddy Direct Seeding
System of Rice Intensification (SRI)
Dryland Technologies
Sustainable Sugarcane Initiative
Transplanting in Redgram

SCHEMES & SERVICES

Govt. Schemes & Services
Development Blocks
Banking & Credit
Crop Insurance
NADP / NAIP in TNAU
ATC | KVK
ATMA | NGOs & SHGs
Agri Clinics | SFAC
Kisan Call Centre | SAMETI
MDG-2015

RECENT UPDATES

TN Budget Speech 2015-16 **NEW**
Seed Availability - Seed Stock Position as on 10.04.2015 **NEW**
2014-2015 Global Food Policy Report (IFPRI)
Share your ideas on PM's Mann Ki Baat with Farmers

AGRI INFORMATION

Indigenous Farming
Sustainable Agriculture
Patents
Farm Enterprises
Residues & Dietary Risk
Food Safety & Standards
District Contingency Plan
Stat-Hand Book - 2014
Horti-Hand Book - 2014
Important Links | Blogs

MARKET INFORMATION

AGMARKNET
DEMIC - Press Notes
Farmers Producer Organisation
Minimum Support Price
Input Source
Export & Import
NIAM | FIEO | FCI | NHRDF
MCX | NCDEX | NSEL
AGRISNET | FCMS
ICT Initiatives

RELATED INFORMATION

CM's Uzhavar Pathukappu Thittam
Agri. EB Service Connection
TN Revenue Department
Environment & Pollution
Disaster Management
GOI-12th Five Year Plan
TN-12th Five Year Plan
TNAU-12th Five Year Plan
Season & Crop Report (2012-13)
ODL (Open & Distance Learning)

DAILY EVENTS

TNAU Press Notes
TN Government Announcements
TNAU Community e-Radio
Television Programs
Farm Radio Programs
Water Dams in Tamil Nadu
HRD (Agricultural Trainings & Events)
IMD -Chennai (Nowcasting)
Agro Meteorological Advisory
Farmers' Portal



NEWS Daily Newspaper Information (Farm News)

TNAU Weather

Agricultural Market Information System

Organic Farming

Crop Doctor

Crop Protection

Nutrient Deficiency

Post Harvest Technology

Awards





Fig. 1



Fig. 2



Fig. 3

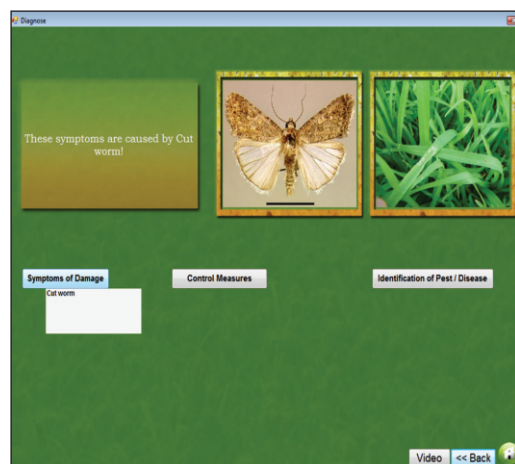


Fig. 4



Fig. 5

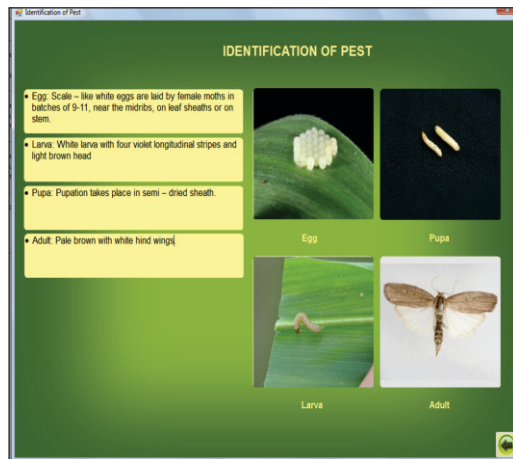


Fig. 6

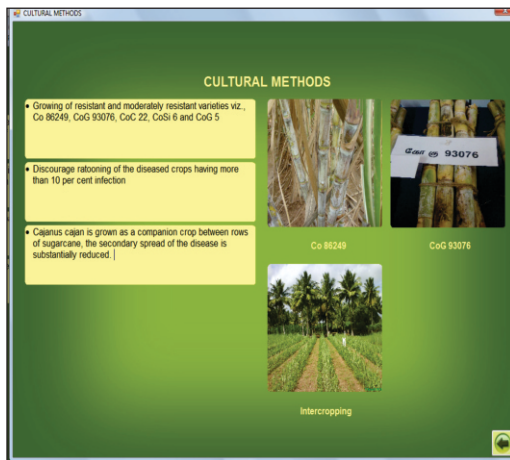


Fig. 7

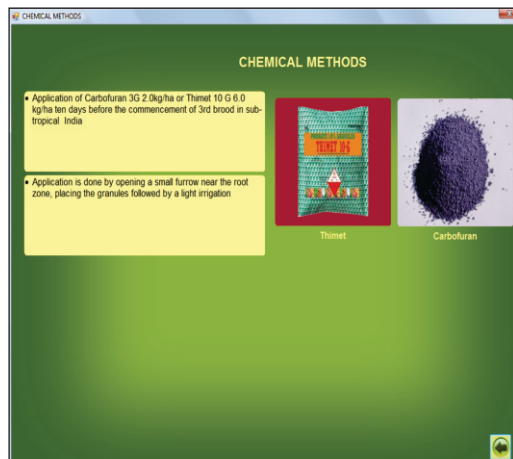


Fig. 8



Fig. 9

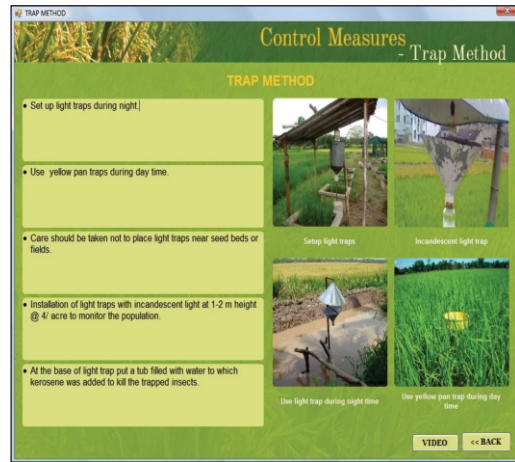


Fig. 10

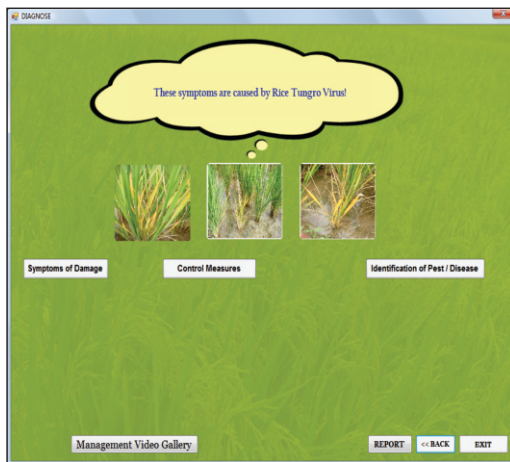


Fig. 11

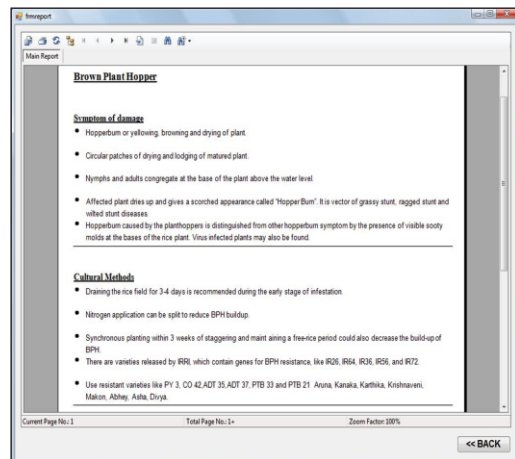


Fig. 12

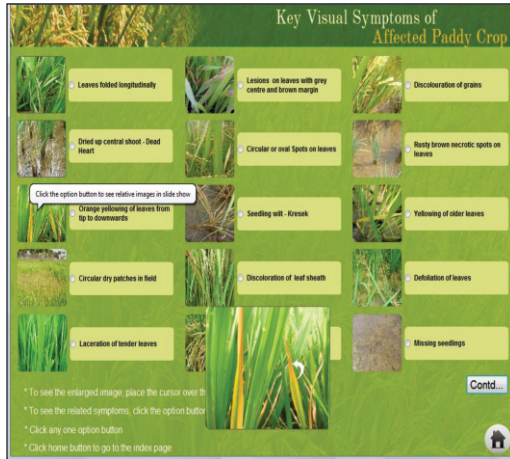


Fig. 13

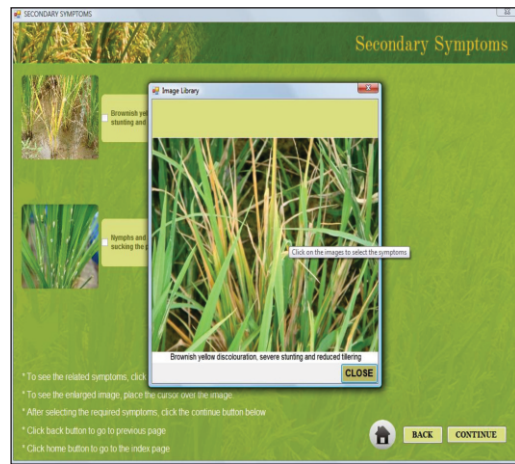


Fig. 14



Fig. 15

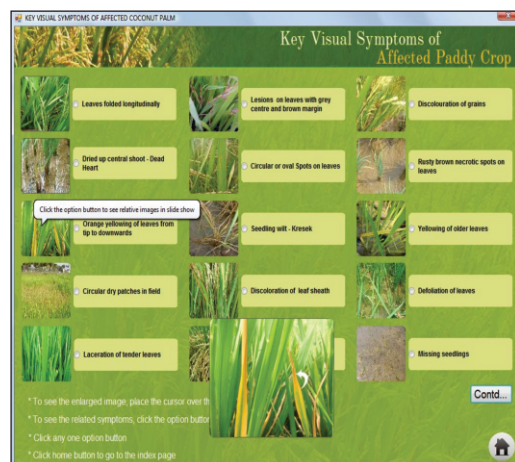


Fig. 16



Fig. 17

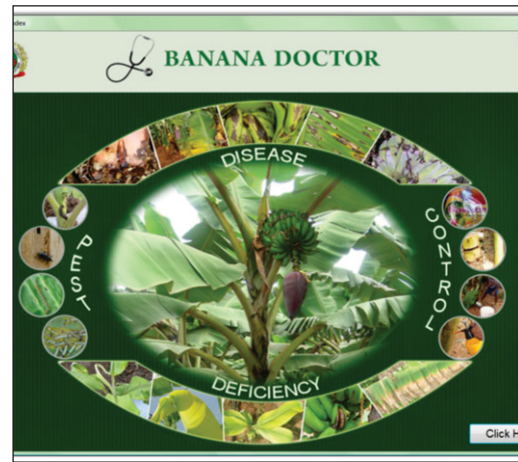


Fig. 18

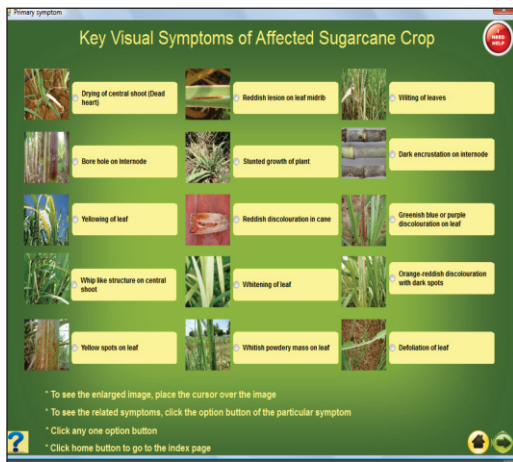


Fig. 19



Fig. 20